



### Summary Report of Public Meeting #1

February 23, 2019

Austin Parks Foundation is leading the effort to renovate and enhance the park at North Oaks Neighborhood Park with funding from St. David's Foundation. Working closely with the City of Austin and the neighborhood, this project will include new play elements and equipment to enhance the play options at the park.

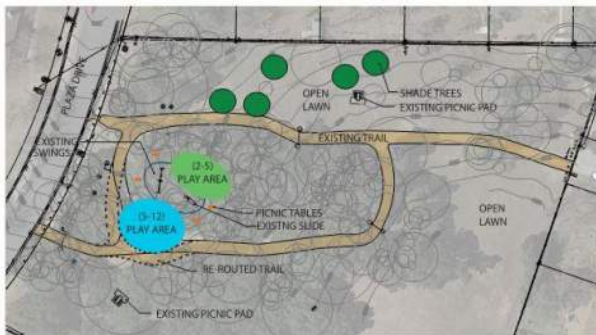
The first public meeting included approximately thirty (30) attendees and was held from 10 am-12 pm on Saturday, February 23rd at the North Oaks Neighborhood Park at 820 Plaza Drive. The meeting featured various graphics, including two playground layout options, three play structure options for ages 2-5, and two play structure options for ages 5-12. Additionally, the meeting included activity stations in which attendees can vote for their favorite options and provide additional comments.



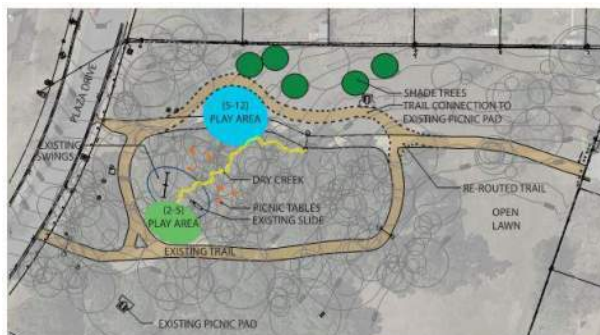
"Pick your Playground" activity stations

### Activity: Pick your Playground

Meeting attendees were provided with two large graphic boards: one featuring two layout options for the playground location and the second illustrating the five play structure options. Participants were given stickers to vote for their favorite location and play structure.








Layout Option 1: 7 votes



Layout Option 2: 22 votes



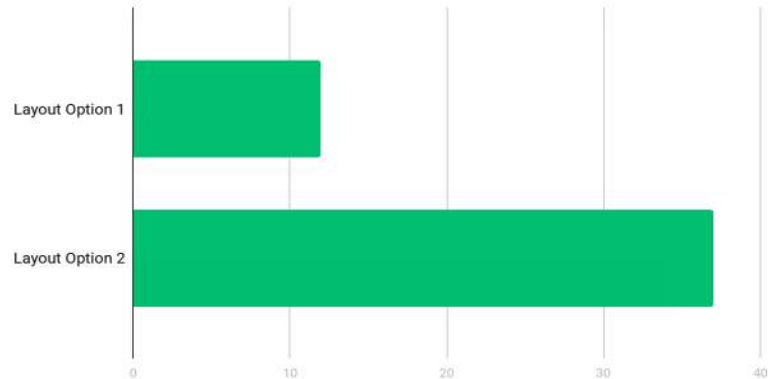
AGES 5-12 PLAY STRUCTURE OPTIONS	Votes/Comments
 <p>TRADITIONAL STRUCTURE WITH TOWER</p> <ul style="list-style-type: none"> <li>- Multiple deck heights</li> <li>- 4 slides</li> <li>- 2 step climbers</li> <li>- Climbing wall</li> <li>- Disc climber</li> <li>- Bridge</li> <li>- Size (43'L x 34'W x 22'HT)</li> </ul> <p><b>OPTION A</b></p>	<p><b>15</b></p>
 <p>MULTI LEVEL NET CLIMBER</p> <ul style="list-style-type: none"> <li>- Top Fortress</li> <li>- Hammock</li> <li>- Jungle Bridge</li> <li>- Hand Over Hand Ladder</li> <li>- Suspension Bridge</li> <li>- Curved Slide</li> <li>- Rubber Seats</li> <li>- Size (43'L x 41'W x 21'H)</li> </ul> <p><b>OPTION B</b></p>	<p><b>22</b></p>
AGES 2-5 PLAY STRUCTURE OPTIONS	Votes/Comments
 <p>NATURE PLAY ELEMENTS</p> <ul style="list-style-type: none"> <li>- Logs (concrete and natural)</li> <li>- Net Climber</li> <li>- Climbing Boulders (concrete and natural)</li> <li>- Dry Creek Bed</li> </ul> <p><b>OPTION A</b></p>	<p><b>15</b></p> <p>-Blends in with the forest environment</p>
 <p>TRADITIONAL SEQUENCE</p> <ul style="list-style-type: none"> <li>- Wall Climber with grips</li> <li>- Stump Steppers</li> <li>- Ladder Steppers</li> <li>- 2 Tunnels</li> <li>- Size: (21'L x 16'W)</li> </ul> <p><b>OPTION B</b></p>	<p><b>1</b></p> <p>-Needs a wider range of activities</p>
 <p>LINKED PLAYHOUSES WITH NET BRIDGES</p> <ul style="list-style-type: none"> <li>- 3 Linked Playhouses</li> <li>- 2 Net Bridges</li> <li>- Slide</li> <li>- Steps</li> <li>- Ramp</li> <li>- Size (28'L x 19'W x 9'HT)</li> </ul> <p><b>OPTION C</b></p>	<p><b>23</b></p> <p>-More activities to exercise motor skills</p>



### Online Survey Results

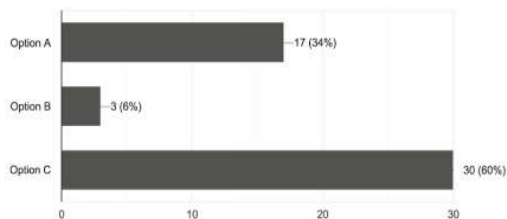
An online survey was opened for one month after the meeting for attendants to fill out. Through the survey, we were able to collect information about which playground layout and amenities the community prefers along with comments and concerns about development of the new playground.

Overall, which do you prefer? | En general, ¿cuál prefieres?

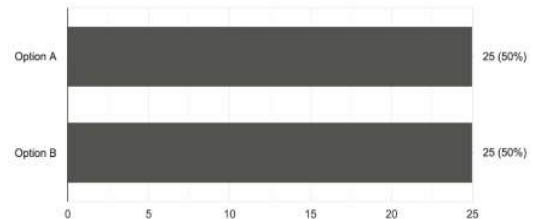


Fifty (50) participants provided responses. All were 21 years old and older, half of which live in a house in the neighborhood while the other half live in an apartment complex adjacent to the park. 62% of the households have children. Twelve (12) households have 0-2 year olds, ten (10) have 2-5 year olds, thirteen (13) have 5-10 year olds, and six (6) have 10-18 year olds.

Overall, which play structure do you prefer for the 2-5 age? | En general, ¿qué estructura de juego prefieres para la edad de 2 a 5 años?  
50 responses



Overall, which play structure do you prefer for the 5-12 age? | En general, ¿qué estructura de juego prefieres para la edad de 5-12?  
50 responses



The most important values documented for the future playground were:

1. Natural play elements
2. Seating around playground for parents
3. Well dispersed amenities to utilize the open space

Some of the hopes and concerns expressed about the development of the playground included:

1. Lighting at night for safety
2. Age-appropriate structures to improve mobility
3. More swings and slides