



**AUSTIN PARKS
FOUNDATION**

PEOPLE PLUS PARKS





**AUSTIN PARKS
FOUNDATION**
PEOPLE PLUS PARKS



PARK DESIGN SERVICES

Park Design Services

Offered by Austin Parks Foundation

Park Design Assistance



Detailed Park Design



Park Master Planning



Park Master Planning

Process guides Adopt-A-Park groups through visioning and creating an adopted Park Master Plan

Awarded:

- Once a year to neighborhood, school and pocket parks only
- Spring Application date
- **Scenic Brook Pocket Park is the 2019 recipient**

Process:

- 6 month process
- Form Park Design Committee
- Conduct Site Inventory and Analysis
- Community Outreach including three public meetings
- Primary Outcome: **Adopted Park Master Plan by City of Austin**



Scenic Brook Pocket Park

Katie Robillard – APF
Darcy Nuffer – PARD
Charles Mabry – PARD

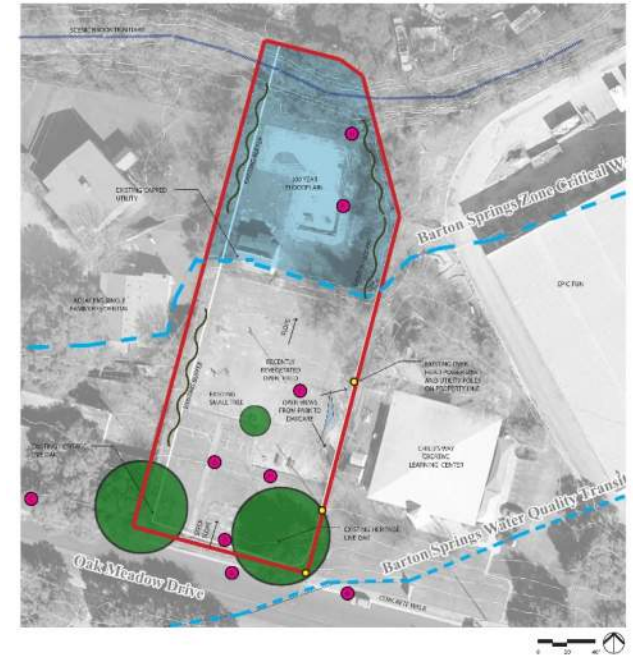
Park Design Committee: Rachel Moede (Chair) Cynthia Dietz
Patti McCabe Mindy Chenoweth

Community Meeting #1

Thursday September 26, 2019 6-8pm
at Travis County Community Center at Oak Hill, Precinct 3



SCENIC BROOK POCKET PARK
Existing conditions / photos



OBSERVATIONS:

- Revegetation in process from demolition.
- Overall good site drainage, no visible low spots. Site slopes from road to creek at rear of property.
- Various fence types along perimeter and some dense vegetation present.
- Clear visibility though park.
- Two mature live oaks present along street.
- Severe grade change is present from back of curb that currently restricts access into park.
- It appears that there are abandoned utilities from the old post house.

GENERAL SITE ANALYSIS:

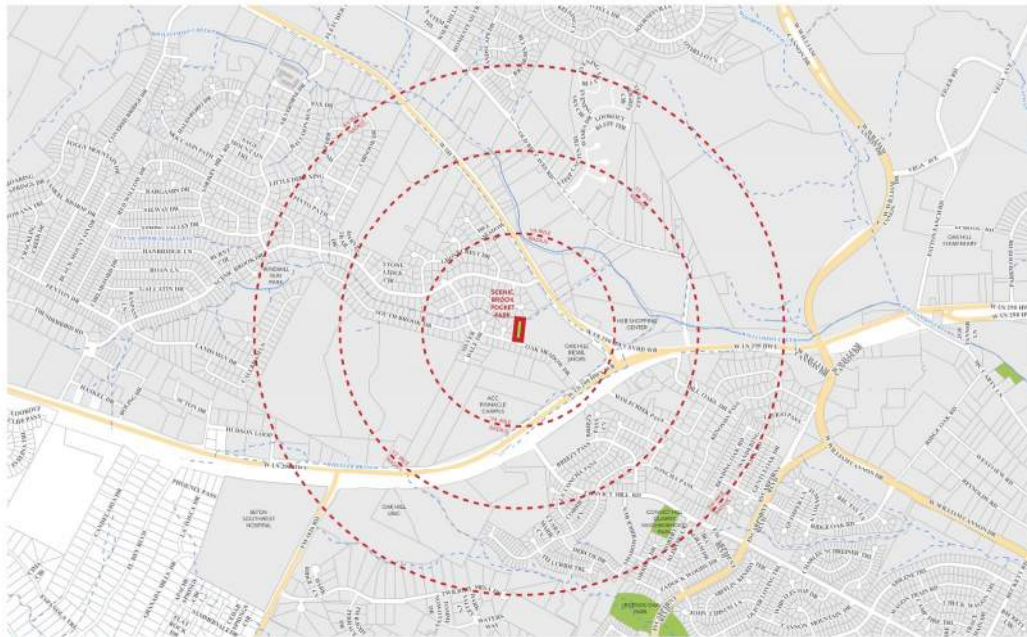
- Accessibility is an issue and will need to be addressed to allow access to site and safe connection to surrounding community.
- Shade is limited and should be incorporated into plan.
- Due to the compact site, the design shall carefully consider placement proposed park elements and adjacent uses.

WATERSHED RESTRICTIONS:

- Barton Springs Zone - Critical Water Quality Zone
- Barton Springs Water Quality Transition Zone
- With roughly 1/3 of the site in the 100 year flood plain and in the Barton Creek Zone Critical Water Quality Zone and the entire park in the Barton Springs Water Quality Transition Zone, proposed park elements will need to be closely reviewed by COA Watershed Protection.
- Restrictions include impervious cover requirements, set backs from waterways, site element placement in master plan, etc.



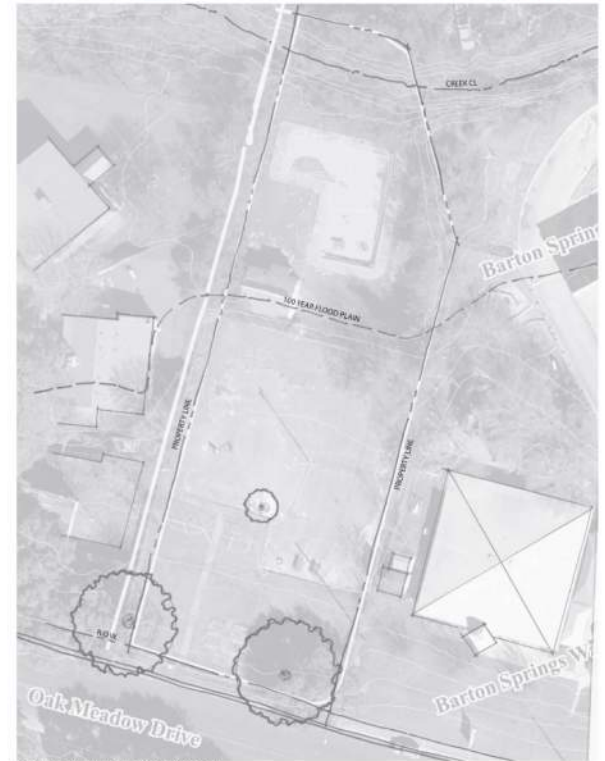
SCENIC BROOK POCKET PARK
Site Analysis and Observations




SCENIC BROOK POCKET PARK
 Map your location



SCENIC BROOK POCKET PARK
 Design your park



COMMENTS / DEJA TUS COMENTARIOS:



Park Master Planning Timeline

August 27, 2019

Park Design Committee Meeting #1 – Project Kick-off

September 26, 2019

Community Meeting #1

Site Analysis, Input on Park Amenities, open online survey

Mid October 2019

Park Design Committee Meeting #2

Early November 2019

Community Meeting #2

Preliminary layout for public comment/ input on phasing and layout, open online survey

Early December 2019

Park Design Committee Meeting #3

End of 2019

Park Master Plan process complete

Formal submittal to PARD for approval process



Project Website

For all information and events

<https://austinparks.org/scenic-brook-pocket-park/>

Online survey will be available until Sunday, October 13, 2019

THANK YOU!