



AUSTIN PARKS FOUNDATION

PEOPLE PLUS PARKS



ACTIVATION



ENGAGEMENT



INVESTMENT



**AUSTIN PARKS
FOUNDATION**
PEOPLE PLUS PARKS



PARK DESIGN SERVICES

Park Master Planning

Process guides Adopt-A-Park groups through visioning and creating an adopted Park Master Plan

Awarded:

- Once a year to neighborhood, school and pocket parks only
- Spring Application date
- **Scenic Brook Pocket Park is the 2019 recipient**

Process:

- 6 month process
- Form Park Design Committee
- Conduct Site Inventory and Analysis
- Community Outreach including three public meetings
- Primary Outcome: **Adopted Park Master Plan by City of Austin**



Scenic Brook Pocket Park

Katie Robillard – APF
Darcy Nuffer – PARD
Charles Mabry – PARD

Park Design Committee: Rachel Moede (Chair) Cynthia Dietz
Patti McCabe Mindy Chenoweth

Community Meeting #1

Thursday September 26, 2019 6-8pm
at Travis County Community Center at Oak Hill, Precinct 3

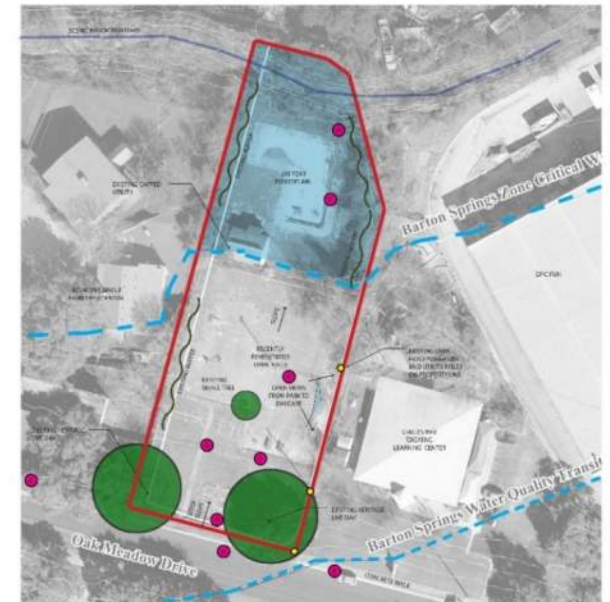


SCENIC BROOK POCKET PARK
Map your location

SCENIC BROOK POCKET PARK Design your park



COMMENTS / DEJA TUS COMENTARIOS
Beauty / art / nature / gardening / play for many ages (elders, teens, young kids)



- | | | |
|----------------------------------------------------------------------------------------------------------------------------------------------------------------------------------------------------------------------------------------------------------------------------------------------------------------------------------------------------------------------------------------------------------------------------------------------------------------------------------------------------------------------------------------------------------------------------------------------------------------|---------------------------------------------------------------------------------------------------------------------------------------------------------------------------------------------------------------------------------------------------------------------------------------------------------------------------------------------------------------------------------------------------------------------|--------------------------------------------------------------------------------------------------------------------------------------------------------------------------------------------------------------------------------------------------------------------------------------------------------------------------------------------------------------------------------------------------------------------------------------------------------------------------------------------------------------------------------------------------------------------------------------------------------------------------|
| <p>OBSERVATIONS:</p> <ul style="list-style-type: none"> - Revegetation in process from demolition - Overall good site drainage, no visible low spots. Site slopes from road to creek at rear of property - Various fence types along perimeter and some dense vegetation present - Clear visibility through park - Two mature live oaks present along street - Severe grade change is present from back of curb that currently restricts access into park - It appears that there are abandoned utilities from the old post house. | <p>GENERAL SITE ANALYSIS:</p> <ul style="list-style-type: none"> - Accessibility is an issue and will need to be addressed to allow access to site and safe connections to surrounding community - Shade is limited and should be incorporated into plan - Due to the compact site, the design shall carefully consider placement proposed park elements and adjacent uses. | <p>WATERSHED RESTRICTIONS:</p> <p>Barton Springs Zone - Critical Water Quality Zone
Barton Springs Water Quality Transition Zone</p> <ul style="list-style-type: none"> - With roughly 1/3 of the site in the 100 year flood plain and in the Barton Creek Zone Critical Water Quality Zone and the entire park in the Barton Springs Water Quality Transition Zone, proposed park elements will need to be closely reviewed by COA Watershed Protection. - Restrictions include impervious cover requirements, set backs from waterways, site element placement in master plan, etc. |
|----------------------------------------------------------------------------------------------------------------------------------------------------------------------------------------------------------------------------------------------------------------------------------------------------------------------------------------------------------------------------------------------------------------------------------------------------------------------------------------------------------------------------------------------------------------------------------------------------------------|---------------------------------------------------------------------------------------------------------------------------------------------------------------------------------------------------------------------------------------------------------------------------------------------------------------------------------------------------------------------------------------------------------------------|--------------------------------------------------------------------------------------------------------------------------------------------------------------------------------------------------------------------------------------------------------------------------------------------------------------------------------------------------------------------------------------------------------------------------------------------------------------------------------------------------------------------------------------------------------------------------------------------------------------------------|

SCENIC BROOK POCKET PARK Site Analysis and Observations

What we heard...

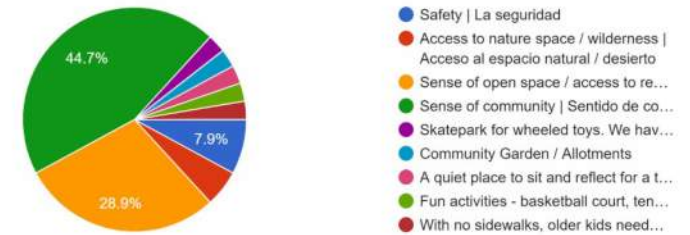
Design My Park activity

Scenic Brook Pocket Park		Community Meeting #1		
Design My Park Activity				
Feature	Tally	Notes and Comments		ECM Notes
Basketball court	6			1/2 court = 2500 sf impervious cover
Traditional Playscape	6	two different play areas for younger and older kids with shade ; all-inclusive playscape with specialized equipment		only impervious curbing counts against impervious cover
Community Garden	6	one note for no community garden		
Shade	5	trees		
Splash Pad	5			counts against impervious cover
Open Space for Play and Sports	5			grass only multi use open space
Seating and Tables	5			
Walking path / trail	4			
Dog Park	3			
Pavilion	2			counts against impervious cover
Nature-based playscape	2			
Skating Feature(s)	2			
Tetherball / small sport feature	2			
Interpretive / educational signage	1	watershed education sinage, history of park wall		
Mosaic / mural	1	beauty / art and nature play for all ages		vertical wall = limited impervious cover
Outdoor Music / Sensory Activity	1			
Water Fountain	1			along trail= minimal impervious cover
Ampitheater and stage area	1	with electricity		grass only and minimize grading
Parking space	1	No extra parking if reduces amount of park features		

Online Survey

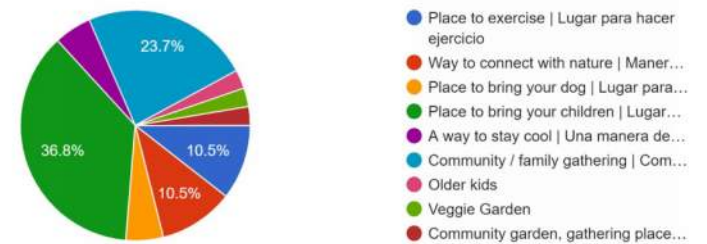
Which value is most important to you for the future park? | ¿Qué valor es más importante para ti para el futuro parque?

38 responses



What is the primary reason you think you will use Scenic Brook Pocket Park for in the future? | ¿Cuál es la razón ...á Scenic Brook Pocket Park en el futuro?

38 responses



Would like to see it complement Windmill Run, with different amenities.

Accessibility, and I want people to use the park

Walkable connection to adjacent retail, needs connectivity on the back property, visibility from street and general appeal

Accessible

Ramp

That it's a place for the community

There are many kids in the neighborhood who like to skateboard/scooter. It would be awesome if the park had cement and a ramp for kids to use.

Active recreation would be a great amenity for the neighborhood.

I would love to see some native trees and flowers planted to support local wildlife such as birds, bees, and butterflies.

Useable for all community members with accessibility for all

Dog Friendly, Wheelchair Accessible

Tetherball, loop Sidewalk, Tire Swing, Obstacle Course , Bench, Wheelchair Swing ,Garden

What we have learned...

WATERSHED RESTRICTIONS

COA Code references: section 1.5.3, section 1.5.4 and section 25.8.26

Impervious Cover Restricted to total of 1000 square feet
(500 square feet in WQTZ and 500 square feet in CWQZ)

100' offset from tributary that limits anything other than a trail within
this setback



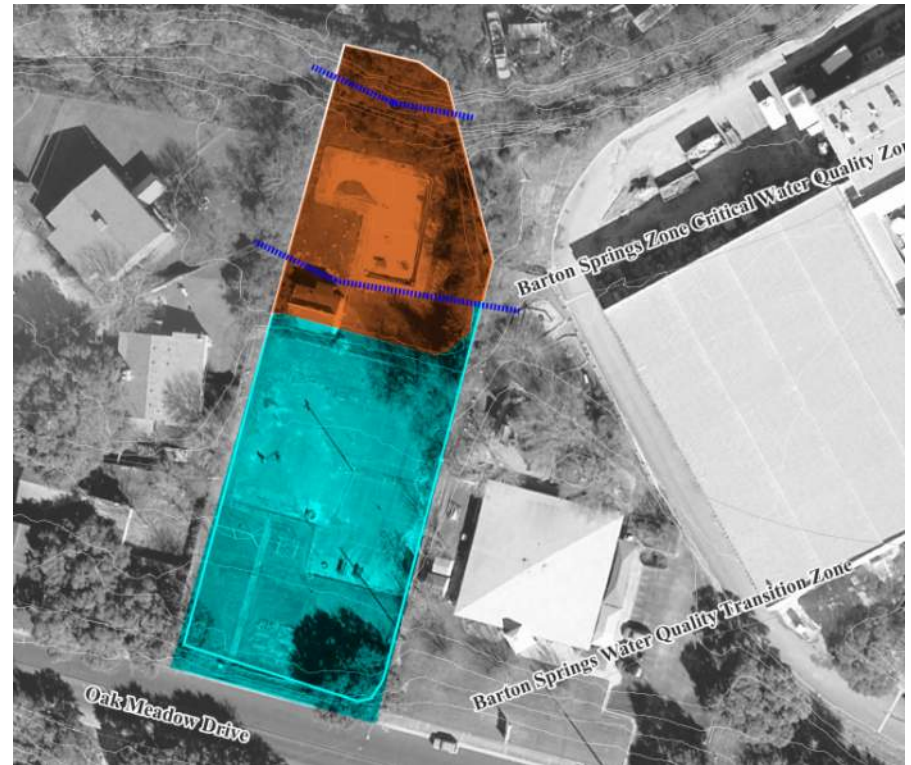
Barton Spring Water Quality Transition Zone



Barton Springs Critical Water Quality Zone



100' Creek Offset



How the design responds

KEY THEMES:

ARRIVAL and IDENTITY

CIRCULATION and ACCESS

ACTIVE RECREATION and PLAY

VISIBILITY and CONNECTION

LEGEND

A	PARK SIGN
B	MAIN PARK ENTRANCE WITH STAIRS AND ACCESSIBLE RAMP
C	COMMUNITY GARDEN PLOTS
D	8' WIDE CONCRETE LOOP TRAIL
E	SKATE FEATURE WALLS ALONG TRAIL
F	INFORMAL PICNIC AREA UNDER HERITAGE TREE
G	EXISTING CONCRETE WALL
H	FLEXIBLE PLAY LAWN
I	SHADE TREE
J	INFORMAL CONNECTION
K	ADVENTURE PLAY EQUIPMENT AND CLIMBING WALL
L	FENCE WITH MURAL
M	NATIVE GRASS AND SITE RESTORATION
N	INFORMAL PERFORMANCE SPACE
O	BENCHES AND SEATWALLS
P	CREEK ACCESS FROM SITE
Q	NATURE PLAY ELEMENTS



ARRIVAL and IDENTITY

Create a formalized fully accessible entry to establish park as an important space that reflects the community



CIRCULATION and ACCESS

Incorporate connections within park to allow access for all to entire park

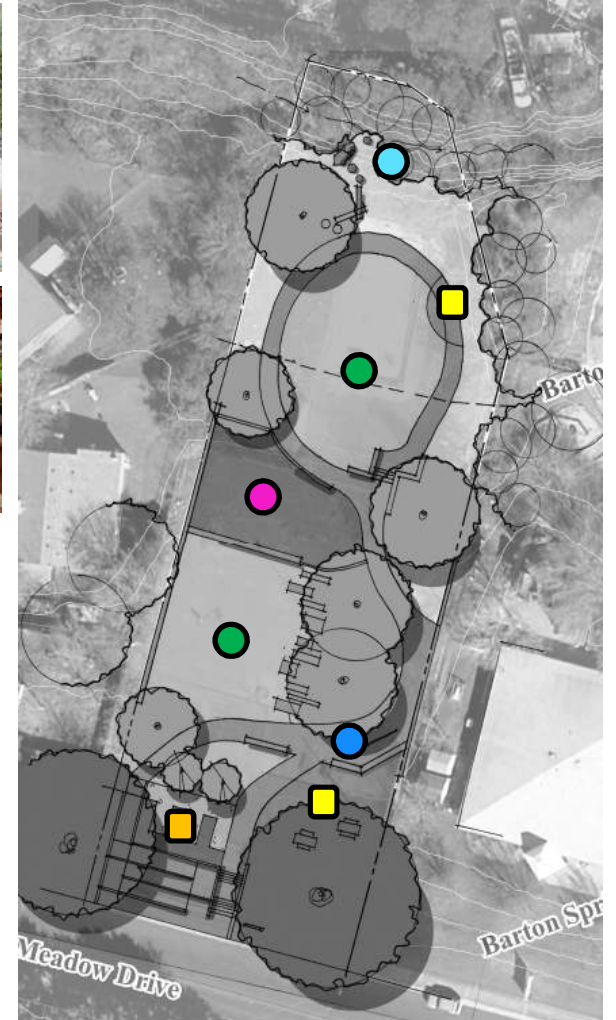




ACTIVE RECREATION and PLAY

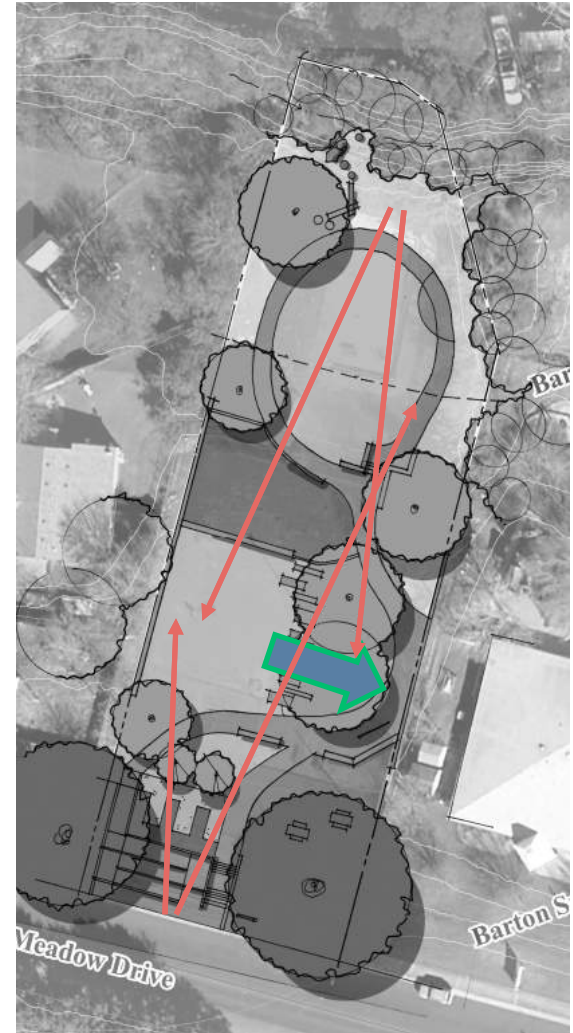
Include park amenities that allow active recreation options for all ages and abilities

-  Flexible lawn
-  Adventure play
-  Garden
-  Explore
-  Skate/ scoot
-  Perform/ Community Gathering



VISIBILITY and CONNECTION

Lay out space to maintain visibility and to foster connections to community and nature safely



Plan Alternates



SPORT COURT OPTION



ALTERNATE LAYOUT

Phasing Recommendation

Access and connection

Primary entry/ loop trail

Access to creek

Land restoration, tree planting

Picnic/ seating

Sport court (if selected) and play equipment



Park Master Planning Timeline

August 27, 2019

Park Design Committee Meeting #1 – Project Kick-off

September 26, 2019

Community Meeting #1

Site Analysis, Input on Park Amenities, open online survey

Mid October 2019

Park Design Committee Meeting #2

December 2019

Community Meeting #2

Preliminary layout for public comment/ input on phasing and layout, open online survey

January 2020

Park Design Committee Meeting #3

February 2020

Park Master Plan process complete

Formal submittal to PARD for approval process



Project Website

For all information and events

<https://austinparks.org/scenic-brook-pocket-park/>

Online survey will be available until *Monday, December 30, 2019*

THANK YOU!