

Onion Creek Metropolitan Park

# All Abilities Playground

*Schematic Design Package*



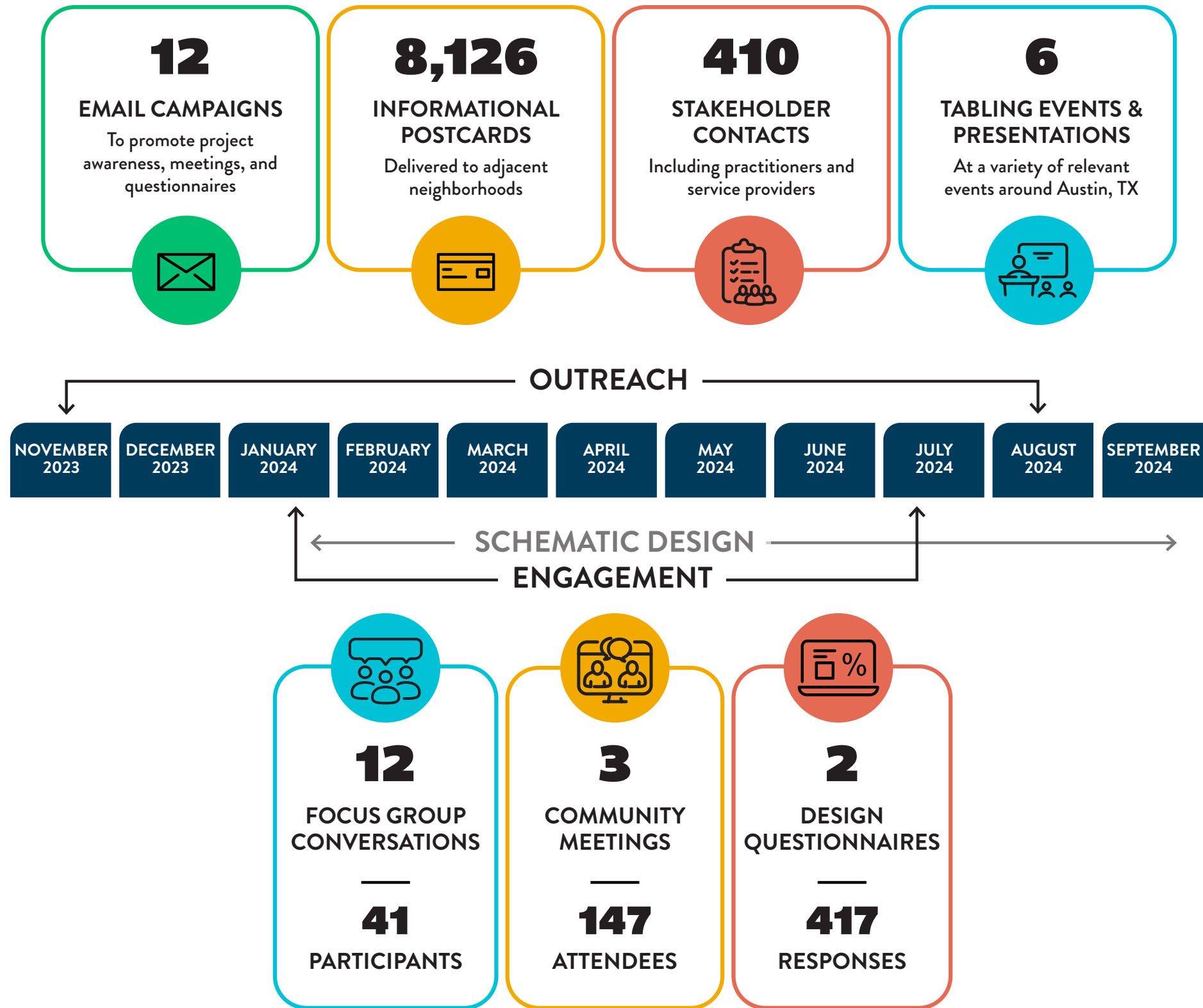
All Abilities Playground  
Schematic Design Package

Austin, Texas  
12.17.2024

pg. 1  
Title Page



# Community Engagement Metrics





# Existing Conditions



All Abilities Playground  
Schematic Design Package

Austin, Texas  
12.17.2024

pg. 3  
Existing Conditions



# Proposed Concept





# Proposed Concept Plan

This proposed All Abilities Playground is designed to provide universal accessibility and inclusivity for all visitors, especially those with disabilities and special needs. We have incorporated feedback gathered from our community engagement process, and we hope that the playground meets the needs and desires of the community it will serve. Our mission is to create a welcoming, accessible, and inclusive environment where everyone can experience the joy of play!

The playground will feature two new parking areas—one to the west and a smaller one to the south—adding over 100 new spaces, including ADA parking, bus spots, and drop-off zones. The existing parking spots to the south will be connected to the playground with an accessible walking path.

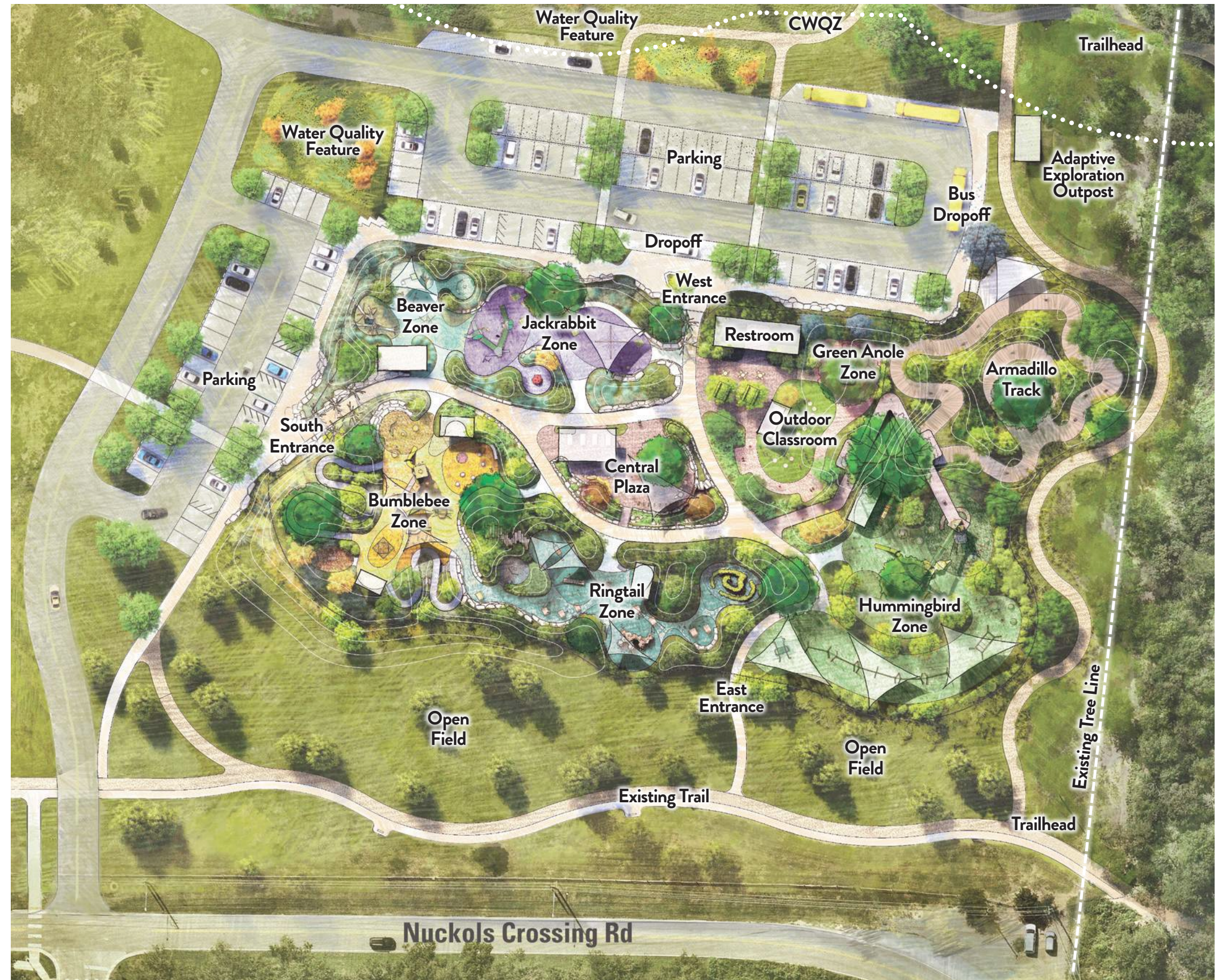
Entrances into the playground will be limited to three main access points, each equipped with a double gate system for extra security. The existing open space along Nuckols Crossing Road will be preserved to maintain park-like views for the nearby neighborhoods and to connect to the larger open space to the south.

The proposed playground layout will connect with the existing perimeter trail around the adjacent fields, as well as the existing natural trails to the north. “The Adaptive Exploration Outpost,” would be an additional programming element where visitors can check out adaptive equipment to explore the larger Onion Creek Metropolitan Park.

The restroom building is placed near the west entrance for easy access and visibility, leading into a central plaza with a covered pavilion, seating, and informational signage. The adjacent outdoor classroom could serve larger groups and provide an outdoor space for learning and instruction.

The playground features a variety of themed spaces, each designed to cater to different abilities and levels of challenge. Each area is clearly marked with animal-inspired zones and unique colors, making navigation simple and intuitive.

*Keep reading to learn about the different play areas!*





# Theme: Larger Than Life

The “Larger than Life” playground theme celebrates the unique animals and habitats of Central Texas. It includes seven distinct play zones inspired by oversized native creatures and their habitats.

Each zone reflects the animals’ special abilities—like the jackrabbit’s agility or the beaver’s creativity—offering children spaces to explore their own strengths through movement, sensory play, and creative adventures.

Natural elements, like trees and woodland trails, blend with educational opportunities to learn about the local environment around Onion Creek. This design encourages children to connect with nature while appreciating their own unique abilities.



**Jackrabbit**  
Low-Level Challenge  
This space is perfect for smaller visitors or those seeking a gentler adventure, this space offers room to hop, skip, and explore in a safe environment.

**Creek Plaza**  
Shaded Central Gathering Space  
The heart of the playground, this plaza is a restful hub with plenty of seating and shade—ideal for relaxing, recharging, or deciding which exciting area to explore next.



**Green Anole**  
Therapeutic and Sensory Area  
A peaceful walk through the woods leads to sensory-focused equipment and quiet nooks, offering calming, therapeutic experiences for all ages.



**Armadillo**  
Wheel Play Track  
Navigate a fun and accessible track featuring diverse terrains and armadillo tunnels, where visitors of all abilities can roll, race, and conquer different challenge levels.



**Beaver**  
Loose Parts and Social Play  
Get inspired by the beaver’s lodge-building skills and be creative with natural, movable building parts that spark imagination, problem-solving, and social interactions through hands-on play.



**Bumblebee**  
Low and Mid-Level Challenge  
Climb, explore, and slide in this hive of activity! Offering mid-level thrills, this space combines adventure with a range of play opportunities for all.



**Ringtail**  
Mid to High Challenge Level  
Just like the nimble ringtail, visitors can test their agility and balance in this area featuring obstacle courses, climbing challenges, and jumping adventures that encourage bold exploration.

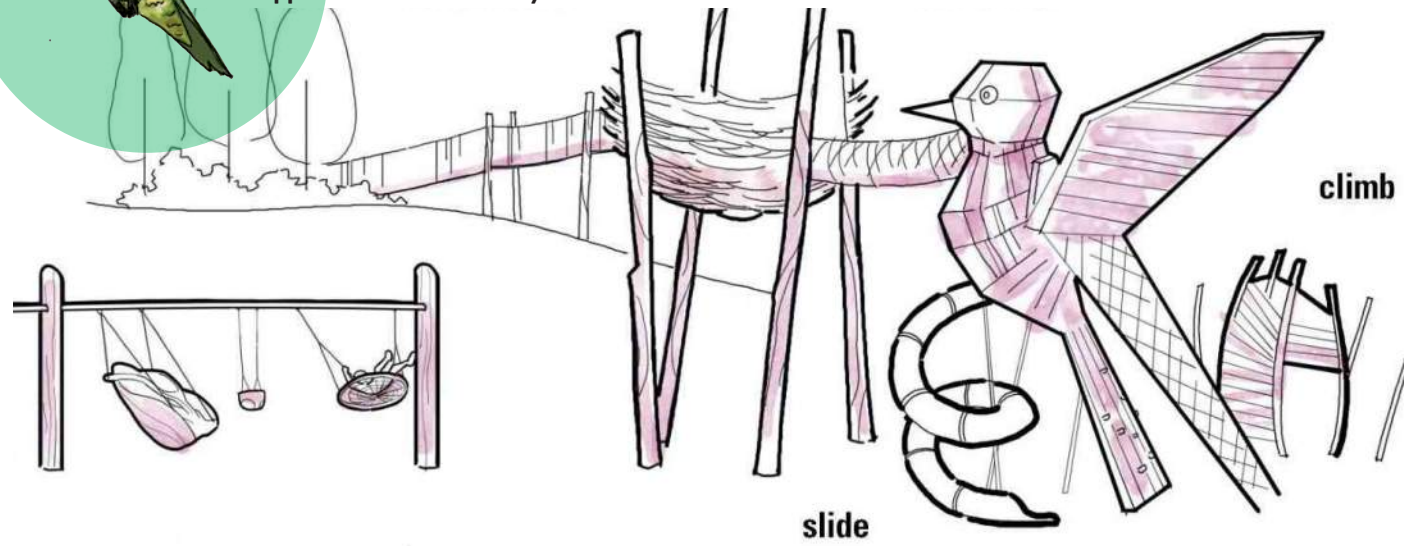


**Hummingbird**  
Opportunities for All to Fly  
Soar to new heights! An elevated walkway, bird-watching tower, zipline, and accessible swings create the perfect place for everyone to enjoy the thrill of flight.

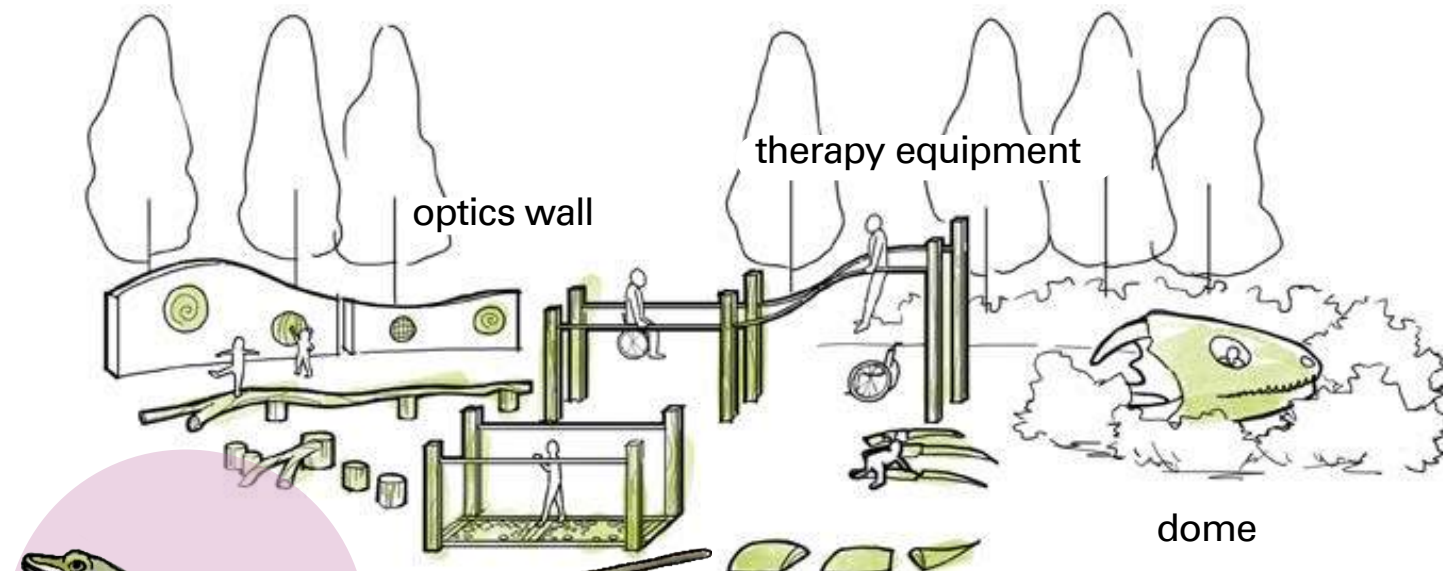
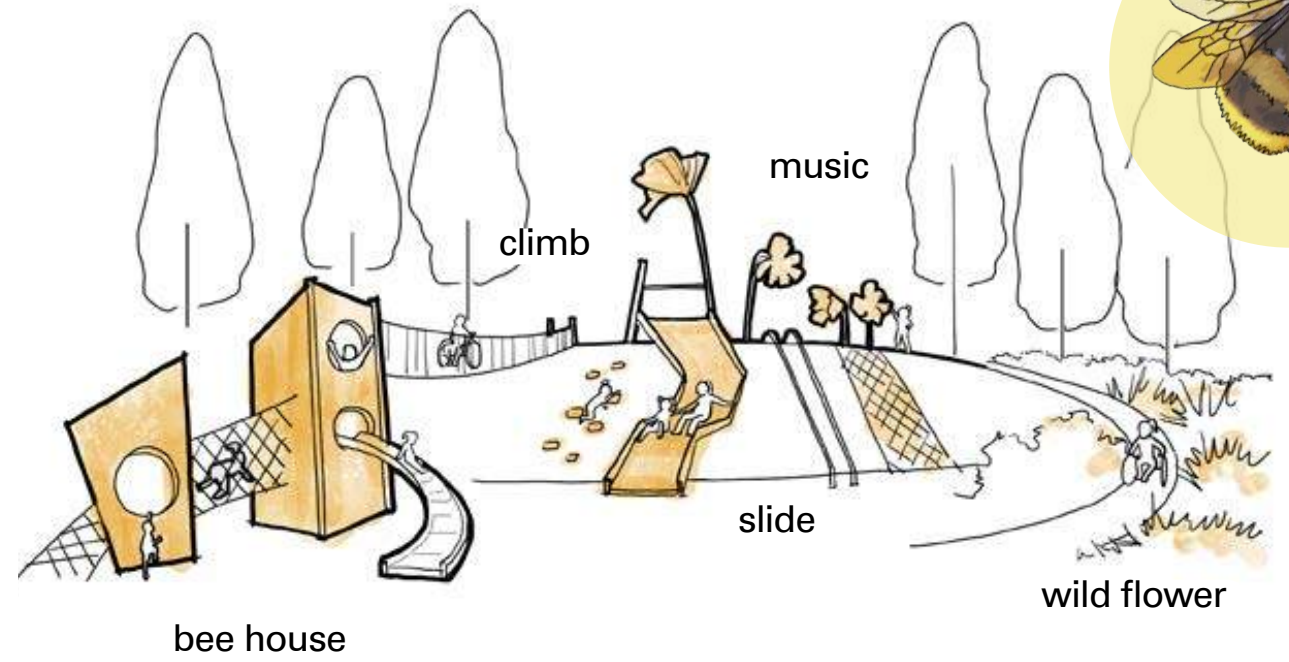
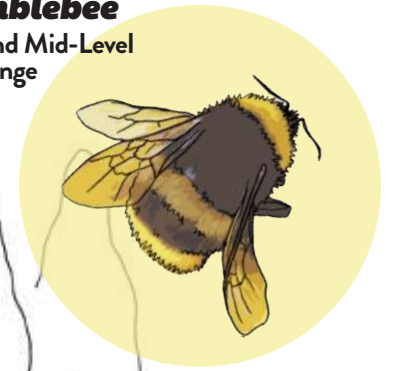




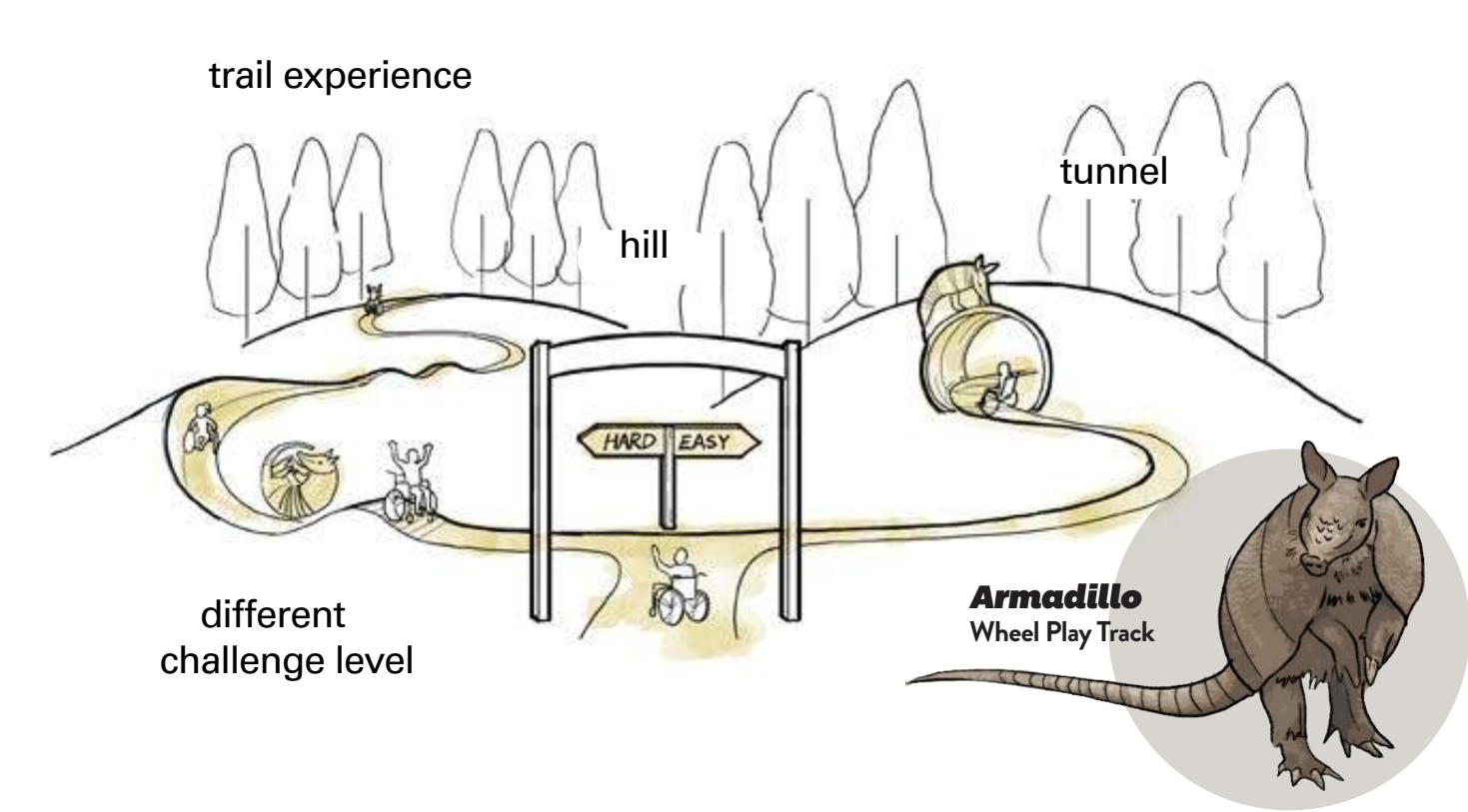
**Hummingbird**  
Opportunities for All to Fly



**Bumblebee**  
Low and Mid-Level  
Challenge



**Green Anole**  
Therapeutic and Sensory Area



**Armadillo**  
Wheel Play Track

# Proposed Architecture

The restroom building will be strategically located within the fenced playground area at the west entrance, providing easy access from the playground, parking area, and greater Onion Creek Metropolitan Park.

Feedback from small group discussions with the disability community emphasized the need for spacious, accessible facilities for all users. To address this, the open-air facility will feature six fully wheelchair-accessible stalls. Four stalls will include standard toilets and changing tables, while two full-size family restrooms will offer added amenities such as sinks, child seats, and adult changing tables, providing extra space and comfort for those who need it.

A centrally located hand washing station designed for all ages and abilities, will be centrally located, and a thoughtfully designed metal screen will ensure privacy. All materials have been carefully selected to complement the playground's aesthetic and the natural beauty of Austin.

